

I M P R O P A L

improvement project for active learning

FORMATIVE ASSESSMENT

some
highlights
& our
experience

Technical University of Cluj – Napoca
Faculty of Architecture and Urban Planning
Department for Teacher Training

Prof. PhD Arch. Mihaela Ioana Agachi

Prof. PhD Arch. Virgil Pop

Lect. PhD Alina Crişan

Lect. PhD Arch. Octav Olănescu

Reader PhD Arch. Cristina Purcar

FORMATIVE ASSESSMENT

“The process used by teachers and students to recognize and respond to student learning in order to enhance that learning, during the learning.”

(Cowie & Bell, 1996/1999)

Formative assessment (FA)



monitors student learning
to provide ongoing feedback that
can be used by:

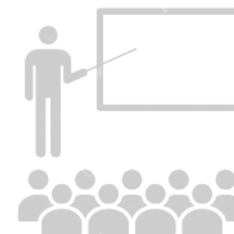
instructors

to improve their teaching

students

to improve their learning

Summative assessment (SA)



evaluates student learning at the end
of an instructional unit by comparing it
against some standard

where, when & how use FA in higher education?

at start

lectures

during (of)

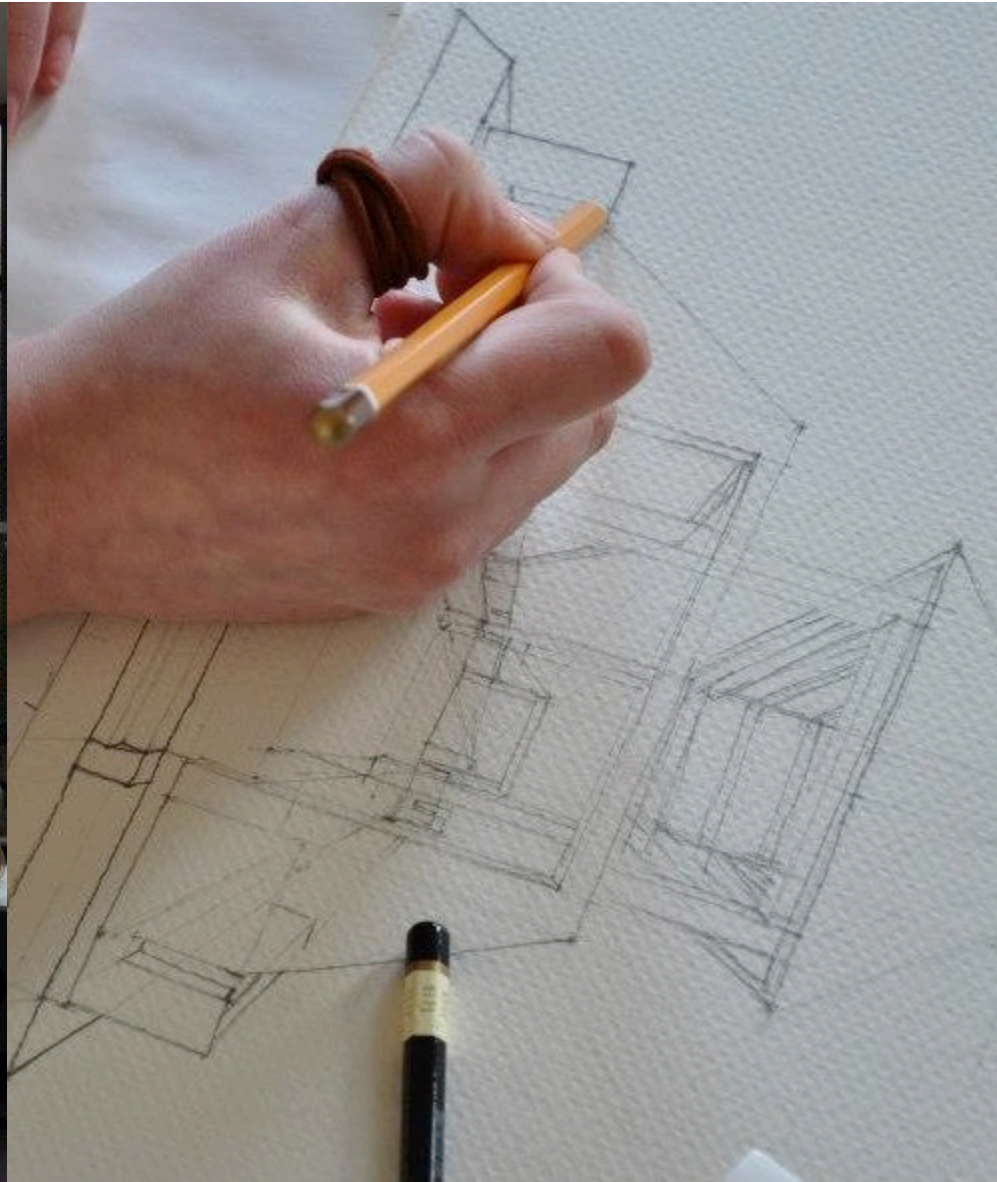
seminars

at end

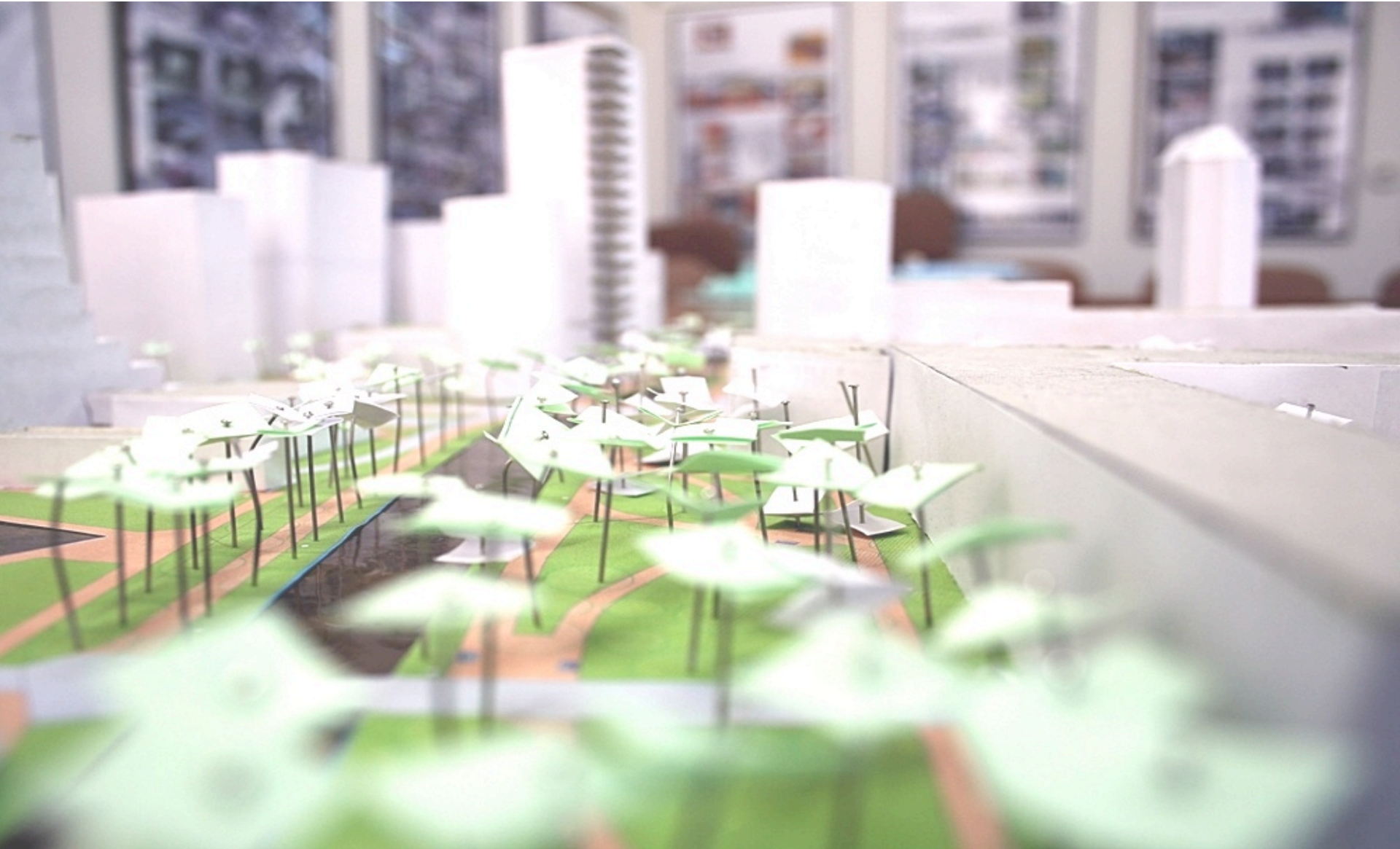
project work

using **fine-tuned**
methods and
techniques










6-year Bachelor & Masters programme



6-year Bachelor & Masters programme

formative assessment methods / techniques

lecture	lecture-with-seminar	project
	 	 
<p>progress tests</p> <p>intensified lecture</p> <p>pre-given key terms</p> <p>mind maps</p> <p>case-study presentations by students</p> <p>peer assessment</p>	<p>progress tests</p> <p>work-in-progress draft</p> <p>research homework</p> <p>study diary</p> <p>gallery tour</p>	<p>work-in-progress draft</p> <p>mind map</p> <p>gallery tour</p> <p>peer and self assessment</p>

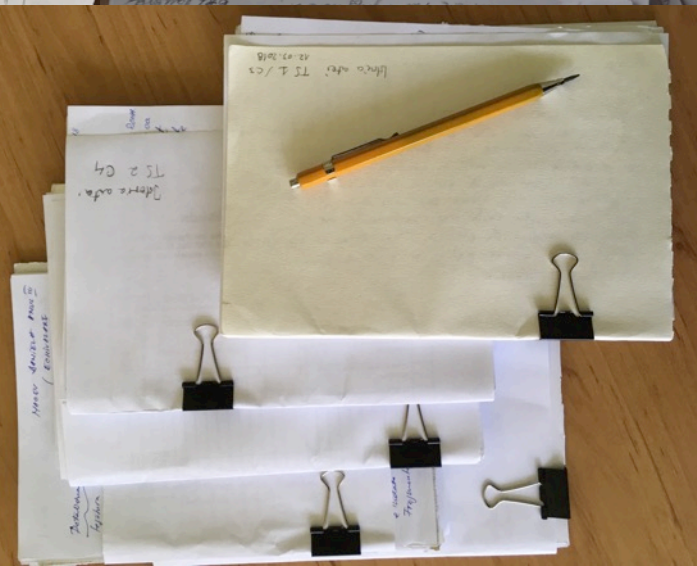


- **INTENSIFIED LECTURE** - promotes active student involvement through alternating teaching sequences with Q&A sequences
- **PRE-GIVEN KEY-TERMS** - discussion over one-two key-terms given by the teacher at the beginning of the lecture, to trigger active participation
- **MIND-MAP** - collective brainstorming for concepts, ideas, relations, written on the blackboard, to help "focus" attention and student participation in the development of the argumentation

• (SHORT) INTERMEDIARY TESTS

- applied at key moments of the teaching activity
- assessed to provide feed-back to both students and teacher
- graded / ungraded

short tests

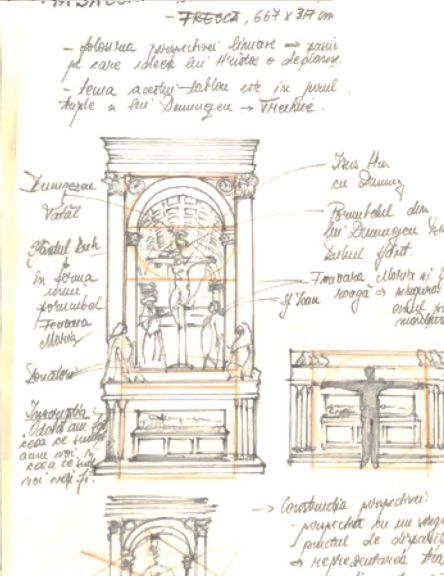
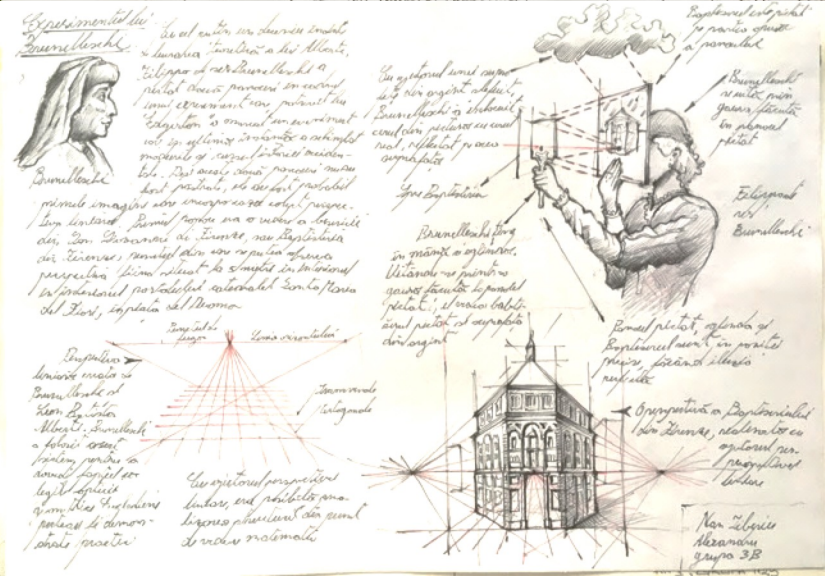


TRANSIZIA GOTIC TÂRZIU SPRE PRE-RENAȘTERE

FA methods and techniques



weekly
optional
research
homework





P1



P2



P3



P4



P5



P6

semestrial
optional
research
homework

Fiind un oras liber regesc, pentru a se dobandite, Clujul trebuia inconjurat de ziduri de ziduri, intarita de bastioane si inconjurat si teritoriile cuprinse intre canalul Someșului pana in spatele Casei de Cultura a studentilor straziile Avram Iancu pana la Calea Turzii, Mare, strada Cuza Voda, pana la canalul Someșului astazi. Dupa cum bine se observa in planul de dupa un plan radiocentric. Din centru, unde orasul prin silueta sa gotica, pornesc strazi care poate ajunge cu usurinta in centru. Strazile sunt este una ortogonala in cetatea veche pe cand curbele de nivel, inscriindu-se foarte bine in retea centrul spre ziduri si strazi secundare. Tot din plan realizata in stil gotic, pe Ulica Lupilor, str. M. Kogălniceanu, zidurilor cetatii, langa Bastionul Croitorilor. Insa nu biserica Iezuitilor si cea a Franciscanilor. Este de remarcă cetatii s-a mai construit o catedrala. In jurul bisericii din cetate Piata Principala. Aici se desfasurau targurile saptamanele cano mestesugari si negustori. Tot in centrul orasului se intalnesc si cladiri mai importante, printre care se numara: "casa sfatului", scoli, biblioteci, bai publice dar si case ale breslelor, mestesugarilor. Clujul era considerat oras mare si bine construit, cu ziduri puternice din piatra si cu numeroase turnuri, iar casele erau considerate a fii cele mai frumoase.

O data cu trecerea timpului vatra veche s-a aglomerat, prin urmare a fost nevoie ca orasul sa se extinda fie inspre zidurile inconjuratoare, fie in afara lor. Proces care are

Search Drive

My Drive > ISTORIA ARTEI curs FAU anII 2017-2018 Cristina PURCAR

freeing time for formative feedback by

Files

Name ↑



PDF C1_Introducere...



PDF C2_MATERIAL...



C2f1_SFMoMA...



C2f2 Khan aca...



C2f3The Alche...



C2f4_Khan Aca...



C2f5_Making G...



PDF C3_continuare...

RAFICA

afis e artist generat in baza clientului - valoare Breuer - felul, punctul
i designul clientului, punct de cultura

afisul este generat in baza clientului - valoare Breuer - felul, punctul
i designul clientului, punct de cultura

afisul este generat in baza clientului - valoare Breuer - felul, punctul
i designul clientului, punct de cultura

PDF C3_Materiale si...



C3f1 GUASA H...



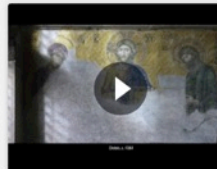
C3f2_GRAV'



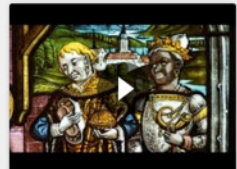
C4f1_Casting B...



C4f2_CERAMIC...



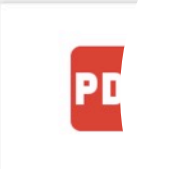
C4f3_MOZAIC ...



C4f4_VITRALIU...



C4f5 MARMUR...



PDF C5_Comp.



7-8_Compozit...

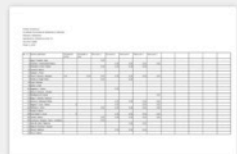


PDF C9_Compozitia...

flipping course material



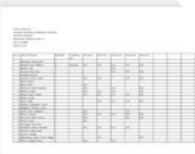
X tabelstudenti-1...



X tabelstudenti-2...



X tabelstudenti-3...



X tabelstudenti-4...

FA methods and techniques



- zona verde publica
- zona verde publica cu acces restrictionat
- zona verde privata
- zona parcare amenajate
- Canalul Morii
- zone verzi cu potential, nevalorificate corespunzator
- zona verde inaccesibila
- accesibilitate pietonala
- zone cu potential valorificare Canalul Morii
- zona in care s-a incercat o relatie pieton-Canalul Morii
- zona innaccesibila Canalul Morii

Concluzii

- zone verzi neamenajate corespunzator si nevalorificate
- nu exista plantatii de aliniamet dispuse ordonat
- zone verzi din preajma accesibile.
- nu exista plante in valoare tr-o amenajatie cu

**assessing
projects
for active theory
learning**

FA methods and techniques



gallery
tours



ImproPal.eu

Co-funded by the
Erasmus+ Programme
of the European Union



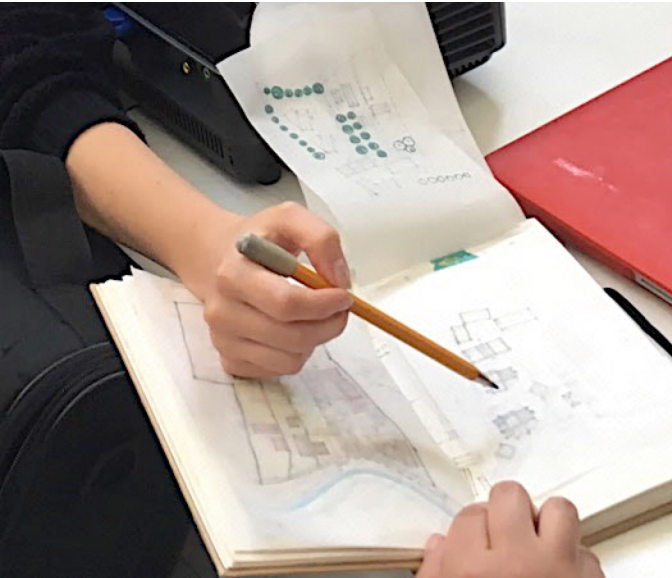
TECHNICAL UNIVERSITY
OF CLUJ-NAPOCA

FA methods and techniques



FA methods and techniques

final project
peer
assessment



by alumni
PhDs



voluntary student presentations



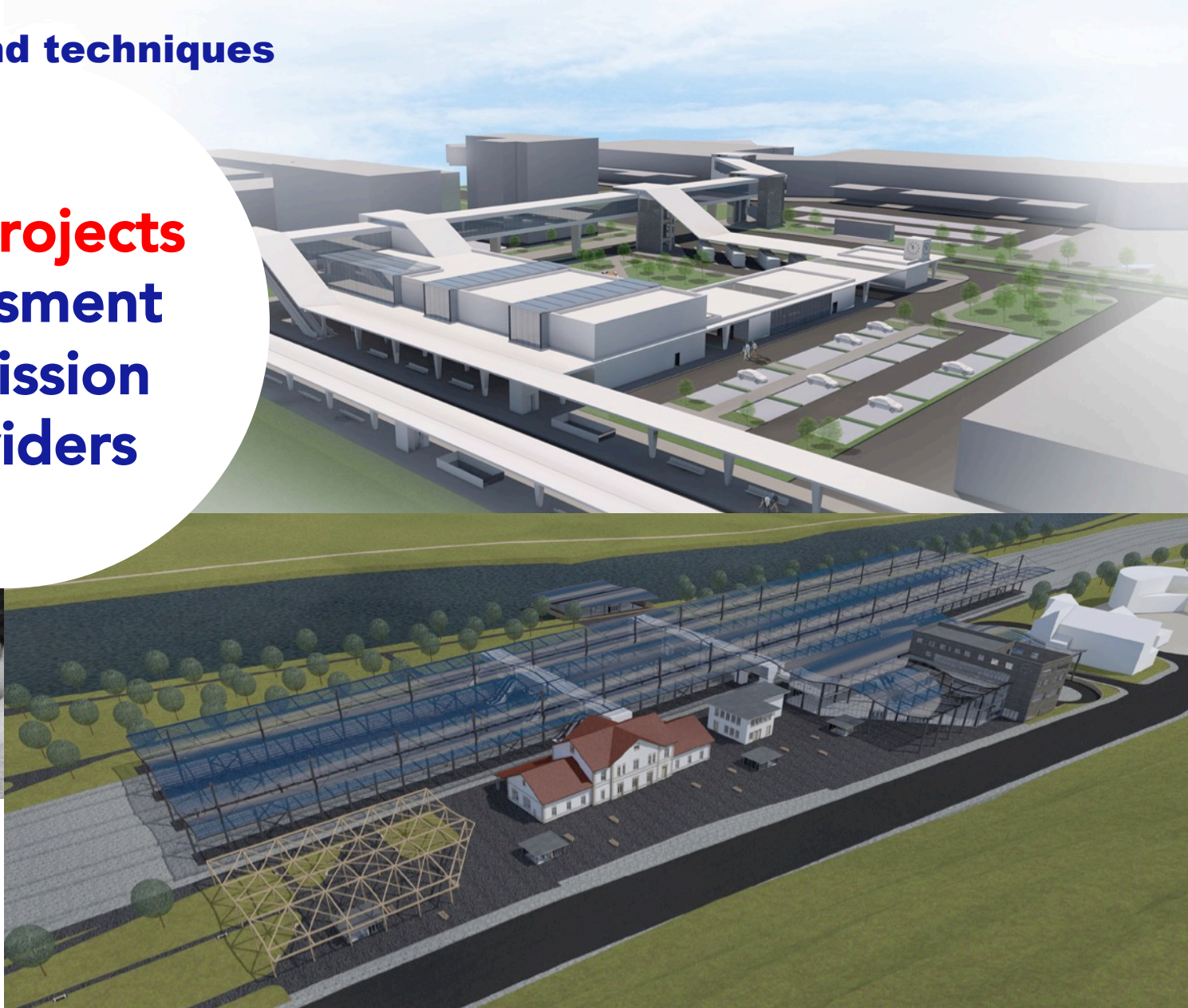
FA methods and techniques



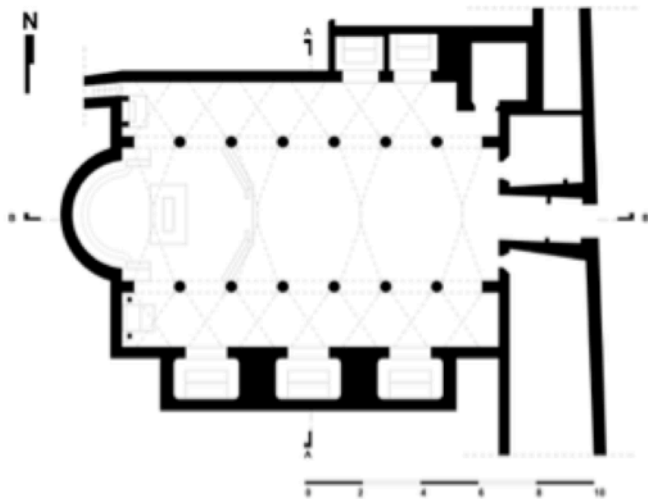
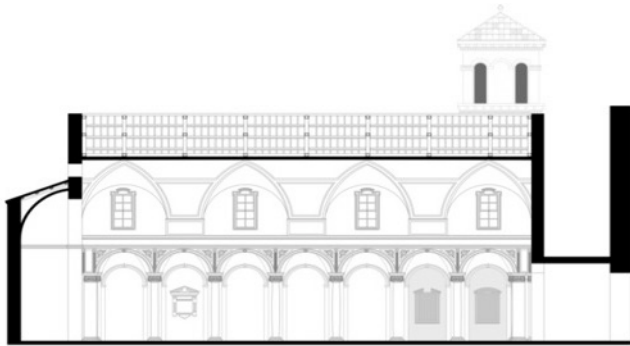
internship
assessment
by public
mission
providers



final projects
assessment
by mission
providers



**research
study
trips
to prepare...**



Sesiunea Națională de Comunicări Științifice Studentești
Cluj-Napoca 17-21 Mai 2017



TRANSFORMAREA BISERICILOR MEDIEVALE ÎN SECOLELE XVI-XVIII STUDIU DE CAZ: BISERICA SANTO STEFANO DEL CACCO, **ROMA**

Autor

¹Facultatea de Arhitectură și Urbanism, Universitatea Tehnică din Cluj-Napoca, Cluj Napoca, oana.iuliaoana@yahoo.com

Îndrumători

Prof.Dr.Arh. Virgil Pop²
Conf.Dr.Arh. Cristina Purcar³

²Facultatea de Arhitectură și Urbanism, Universitatea Tehnică din Cluj-Napoca, Cluj Napoca

³Facultatea de Arhitectură și Urbanism, Universitatea Tehnică din Cluj-Napoca, Cluj Napoca

REZUMAT-ABSTRACT:

Această lucrare prezintă un studiu de istorie arhitecturală a bisericii Santo Stefano del Cacco din Roma, ca monument creștin-timpuriu, transformată în secolele XVI-XVIII. Este o sinteză între cercetarea bibliografică și observațiile făcute în cadrul unei excursii de studiu la Roma, organizată de Facultatea de Arhitectură și Urbanism. Asemenea, studiul propune analogii cu edificii comparabile. Prima parte a lucrării cuprinde informații generale legate de acesteia. În partea a doua sunt prezentate planuri, fațade și secțiuni găsite despre aspectul bisericii în perioada medievală, iar în cea de-a treia, făcute bisericii în perioada barocă, alături de reprezentări arhitecturale. Este o ramură a ordinului benedictin, s-a ocupat de activități de învățământ. Biserica, de-a lungul secolelor, a suferit diverse transformări, asemenea, menționate în lucrare.

...participation in
student
research
conferences

Cristina Purcar 8/5/2017 16:19

Deleted: /autor/

Cristina Purcar 18/6/2017 11:02

Formatted: Space Before: 0 pt,

Cristina Purcar 8/5/2017 16:19

Deleted: /îndrumător/

Cristina Purcar 8/5/2017 16:19

Centered

Cristina Purcar 8/5/2017 16:18

ed

17 16:34

17 16:34

17 16:18

17 16:20

în urma unui...rezin



FA methods and techniques

extracurricular
Erasmus
workshops

VISITING WORKSHOP: Unrolling complexities

July 5, 2017

[Read more](#)



FA methods and techniques



**self-assessing
Erasmus
experiences**



**important to
correlate**

- the FA **method** / technique
- **type** of teaching activity
- **size** of student group
- academic study **level**
- **frequency** of FA





Foto by Traian Nechita <https://www.facebook.com/Cluj2021/photos>



Impropal.eu

Co-funded by the
Erasmus+ Programme
of the European Union



TECHNICAL UNIVERSITY
OF CLUJ-NAPOCA



Cluj-Napoca Days (May)



Museums Night (May)



TIFF (July)



Clujotronic- Electro Arts Festival
(Sept-Oct)



International Theatre Festival
(October)



Comedy Cluj International Film
Festival (October)



Baroque Music Festival (May)



Electric Castle- Banfy Castle (June)



Jazz in the Park Festival- (June)



Smida Jazz Festival (August)



Untold - (August)



Cluj Musical Autumn (October)



European Gymnastics Championship
(April 2017)



EuroBasket
(September 2017)



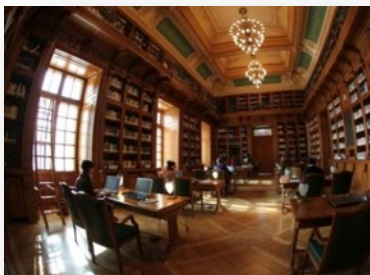
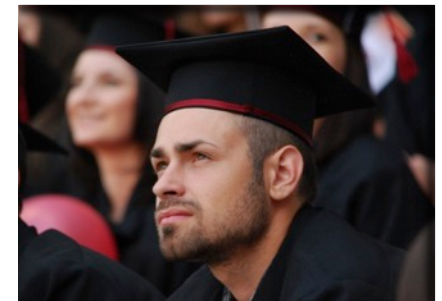
World Fudokan Karate Championship
(November 2017)



ACADEMIA DE MUZICĂ
GHEORGHE DIMA

State universities

- “Babes Bolyai” University
- **The Technical University of Cluj- Napoca (TUC-N)**
- “Iuliu Hațieganu” University of Medicine and Pharmacy
- University of Agriculture Science and Veterinary Medicine
- “Gheorghe Dima” Academy of Music
- “Ion Andreescu” Academy of Visual Arts





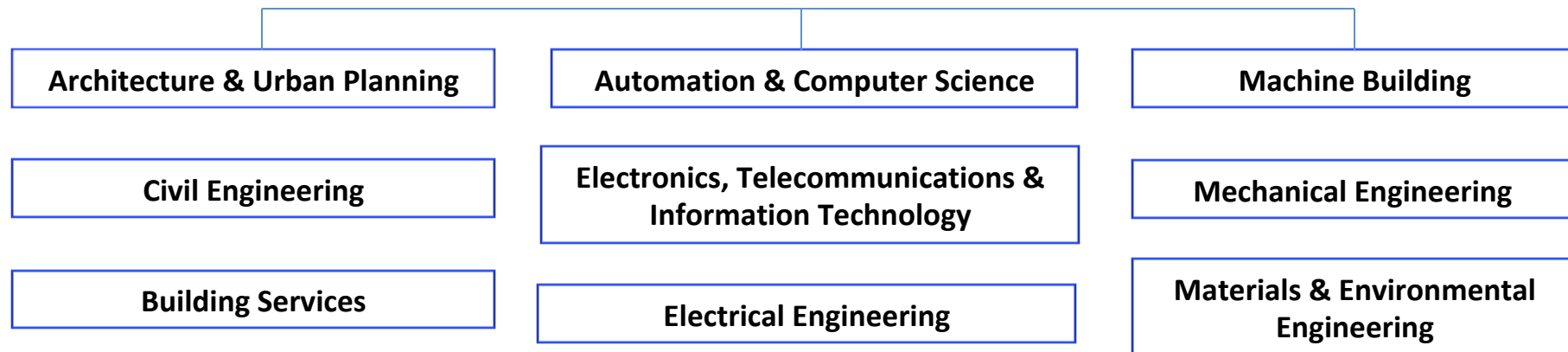
ImproPal.eu

Co-funded by the
Erasmus+ Programme
of the European Union

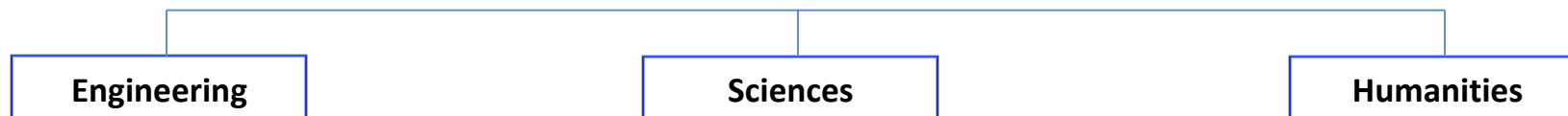


TECHNICAL UNIVERSITY
OF CLUJ-NAPOCA

Cluj-Napoca



Baia Mare





TECHNICAL UNIVERSITY
OF CLUJ - NAPOCA

INTERNATIONAL RELATIONS OFFICE

28, Memorandumului Street
400114-RO, Cluj-Napoca, Romania
Tel: 0040 264 202214, Fax: +40 264 591690
international@staff.utcluj.ro
<http://www.bri.utcluj.ro/>





EUA - European University Association



Agence Universitaire de la Francophonie



Alliance of Universities for Democracy



Black Sea Universities Network

	Institution	Country	Field
1	Universitat Stuttgart	Germany	Innovative Manufacturing Processes and Technology Management - German
2	ARUT (RO) - INSA(FR)	France	Technical field
3	Ecole Nationale Supérieure d'Arts et Métiers	France	Machines Building
4	Ecole Supérieure d'Electricité - SUPELEC	France	Telecommunications and Multimedia Technologies
5	Université de Bordeaux	France	Traitement du signal et des images

Engineer your future with us

English

Bachelor degree
Telecommunications Technologies and Systems



TECHNICAL UNIVERSITY
OF CLUJ-NAPOCA
ROMANIA

<https://etti.utcluj.ro/>

Engineer your future with us

English

Bachelor degree
Robotics



TECHNICAL UNIVERSITY
OF CLUJ-NAPOCA
ROMANIA

<https://cm.utcluj.ro/#>

Engineer your future with us

English

Bachelor degree
Computer Science


TECHNICAL UNIVERSITY
OF CLUJ-NAPOCA
ROMANIA

<https://ac.utcluj.ro/>

Engineer your future with us

English

Bachelor degree
Civil, Industrial and Agricultural Buildings



TECHNICAL UNIVERSITY
OF CLUJ-NAPOCA
ROMANIA

<https://constructii.utcluj.ro/>

Engineer your future with us

English

Bachelor degree
Automation and Applied Informatics



TECHNICAL UNIVERSITY
OF CLUJ-NAPOCA
ROMANIA

<https://ac.utcluj.ro/>

Engineer your future with us

English

Bachelor degree
Applied Electronics


TECHNICAL UNIVERSITY
OF CLUJ-NAPOCA
ROMANIA

<https://etti.utcluj.ro/>

Bachelor programs offered in German/ Master programs offered in English/German/French



Engineer
your future
with us

English
German

TECHNICAL UNIVERSITY
OF CLUJ-NAPOCA
ROMANIA

Bachelor degree
Manufacturing Technology

<https://cm.utcluj.ro/#>



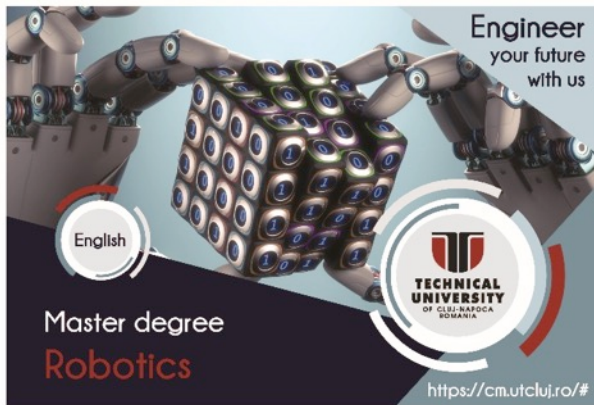
Engineer
your future
with us

German

TECHNICAL UNIVERSITY
OF CLUJ-NAPOCA
ROMANIA

Master degree
**Produktionsprozesse und
Technologie-Management**

<https://cm.utcluj.ro/#>



Engineer
your future
with us

English

TECHNICAL UNIVERSITY
OF CLUJ-NAPOCA
ROMANIA

Master degree
Robotics

<https://cm.utcluj.ro/#>



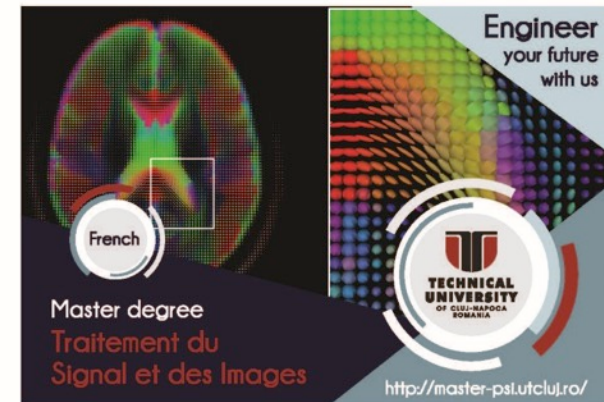
Engineer
your future
with us

English

TECHNICAL UNIVERSITY
OF CLUJ-NAPOCA
ROMANIA

Master degree
**Virtual Engineering and
Competitive Manufacturing**

<https://cm.utcluj.ro/#>



Engineer
your future
with us

French

TECHNICAL UNIVERSITY
OF CLUJ-NAPOCA
ROMANIA

Master degree
**Traitement du
Signal et des Images**

<http://master-psi.utcluj.ro/>